



# FUN WITH GEMS

7th-12th Grade  
Activities



# GUESS THAT GEM

Answers can be used more than once!

TANZANITE  
GARNET  
AMETHYST

TOURMALINE  
AQUAMARINE



A \_\_\_\_\_



B \_\_\_\_\_



C \_\_\_\_\_



D \_\_\_\_\_



E \_\_\_\_\_



F \_\_\_\_\_



G \_\_\_\_\_



H \_\_\_\_\_

A. Tourmaline (Pink) B. Garnet (Spessartine) C. Garnet (Grossular) D. Garnet (Tsavorite)  
E. Tanzanite F. Aquamarine G. Tanzanite H. Amethyst



# GUESS THAT GEM

Here's Your Options...

TOURMALINE  
CITRINE  
SAPPHIRE  
GARNET

AMETHYST  
EMERALD  
TANZANITE  
AQUAMARINE



A \_\_\_\_\_



B \_\_\_\_\_



C \_\_\_\_\_



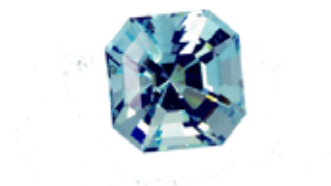
D \_\_\_\_\_



E \_\_\_\_\_



F \_\_\_\_\_



G \_\_\_\_\_



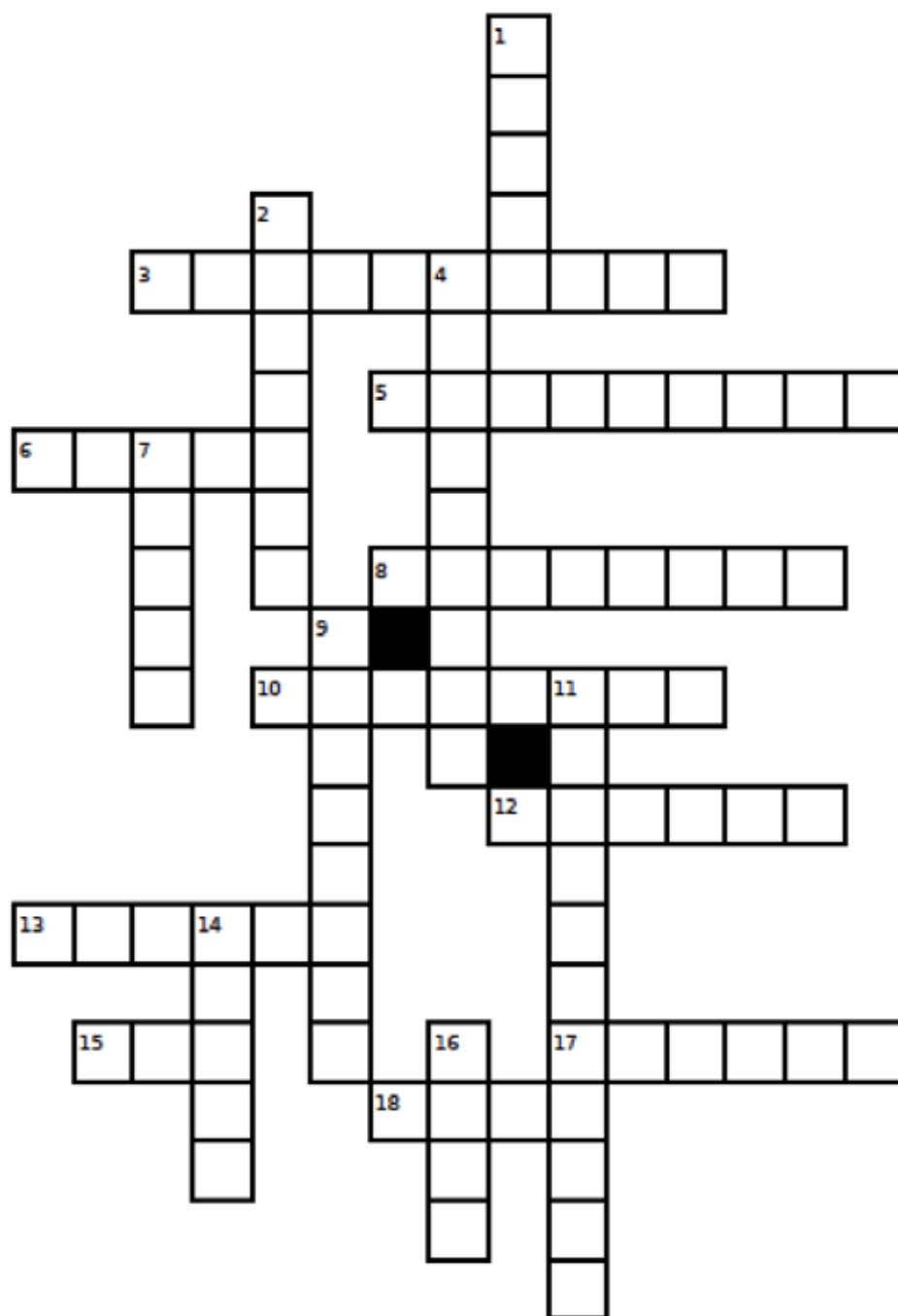
H \_\_\_\_\_

A. Emerald B. Sapphire C. Amethyst D. Garnet E. Tourmaline F. Tanzanite G. Aquamarine H. Citrine



# CROSSWORD PUZZLE

Can you find all the words from the clues on the next page?





# CROSSWORD PUZZLE

Here's your clues!

## DOWN

1. the weight system used for gemstones (hint: homonym is "carrot")
2. a gemstone's natural appearance when found (hint: name for glassware)
4. a man-made gemstone that has the same scientific properties as its real variety (hint: if something is fake)
7. the top of a faceted gemstone (hint: what a king wears)
9. how resistant a gemstone is to being scratched (hint: the opposite of being soft)
11. a rainbow effect inside some gems when held to light
14. the top horizontal facet on the crown of a faceted gemstone (hint: what you sit around to eat food)
16. the place a gem is found, often through digging (hint: how you say something belongs to "me")

## ACROSS

3. a gem assigned to celebrate people born in each month (hint: being born + another word for rock)
5. a foreign object included in the gem during growth (hint: included)
6. flat polished geometric surface on a gem (hint: synonym is aspect)
8. a crystalline or organic mineral (hint: the name for all types of gems)
10. the bottom of a faceted gemstone (hint: the roof of a large open air building)
12. the facets creating the outline of the gem and the boundary between the top and bottom (hint: another name for a belt)
13. the shine or sheen of a gemstone when light reflects off its surface (hint: a glow or sparkle)
15. a smooth, dome shaped stone without facets (hint: another name for a taxi)
17. a chunk missing out of a gem (hint: what the dentist tells you you have if you don't brush your teeth)
18. flashes of rainbow colors occurring in gemstones to varying degrees (hint: flames)



# WORD SEARCH

Can you find all the birthstones? Watch for diagonals!

P Z D O A S A S T K S J P H Q  
R I I X M P T G A D B H Z S C  
P R A Y E I O A B P B R P U I  
P C M D T N P R D O P A S A T  
E O O Q H E A N W P T H Q S R  
R N N E Y L Z E B A F M I K I  
I A D T S R Z T Z L A T U R N  
D M M T T A N Z A N I T E Q E  
O B A L E X A N D R I T E M P  
T K J U M T U R Q U O I S E U  
L Z O P A T O U R M A L I N E  
K O E E O A E H Q R F R C H B  
A Q U A M A R I N E U C R X D  
E M E R A L D C L X K B N H N  
F R W L B X P R T C T R Y C O

## Here's what you're looking for:

Alexandrite  
Aquamarine  
Tourmaline  
Tanzanite  
Sapphire  
Citrine

Emerald  
Turquoise  
Diamond  
Zircon  
Spinel  
Garnet

Ruby  
Amethyst  
Peridot  
Topaz  
Pearl  
Opal





# DECODE THE GEMS

Unscramble the words to find all the birthstones!

GERNAT	_____
TSYATHME	_____
ANMQAIAURE	_____
OMDDNIA	_____
LDEMER	_____
RYBU	_____
EADTINLAREX	_____
ERPAL	_____
EILPNS	_____
OEIDRPT	_____
RAPPEISH	_____
NRALMEITUO	_____
POLA	_____
TPOZA	_____
EIRTNIC	_____
TNZEAITNA	_____
ICRONZ	_____



# CONTINENTS MATCH

Did you know gems come from every continent?  
Unscramble the continents' names then write the  
number from the map in the box next to the name.



- ☐ AASI \_ \_ \_ \_ \_
- ☐ RIAFAC \_ \_ \_ \_ \_
- ☐ ICARTACTAN \_ \_ \_ \_ \_
- ☐ TRONH REICAMA \_ \_ \_ \_ \_
- ☐ REOPEU \_ \_ \_ \_ \_
- ☐ SHOUT CERIAM \_ \_ \_ \_ \_
- ☐ STAIURALA \_ \_ \_ \_ \_





# BIRTHSTONES!

Can you find the right month for all the birthstones?

JANUARY

\_\_\_\_\_

FEBRUARY

\_\_\_\_\_

MARCH

\_\_\_\_\_

APRIL

\_\_\_\_\_

MAY

\_\_\_\_\_

JUNE

\_\_\_\_\_

\_\_\_\_\_

JULY

\_\_\_\_\_

AUGUST

\_\_\_\_\_

\_\_\_\_\_

SEPTEMBER

\_\_\_\_\_

OCTOBER

\_\_\_\_\_

\_\_\_\_\_

NOVEMBER

\_\_\_\_\_

\_\_\_\_\_

DECEMBER

\_\_\_\_\_

\_\_\_\_\_



# BIRTHSTONES!

## Birthstone List

Alexandrite  
Aquamarine  
Tourmaline  
Tanzanite  
Sapphire  
Citrine

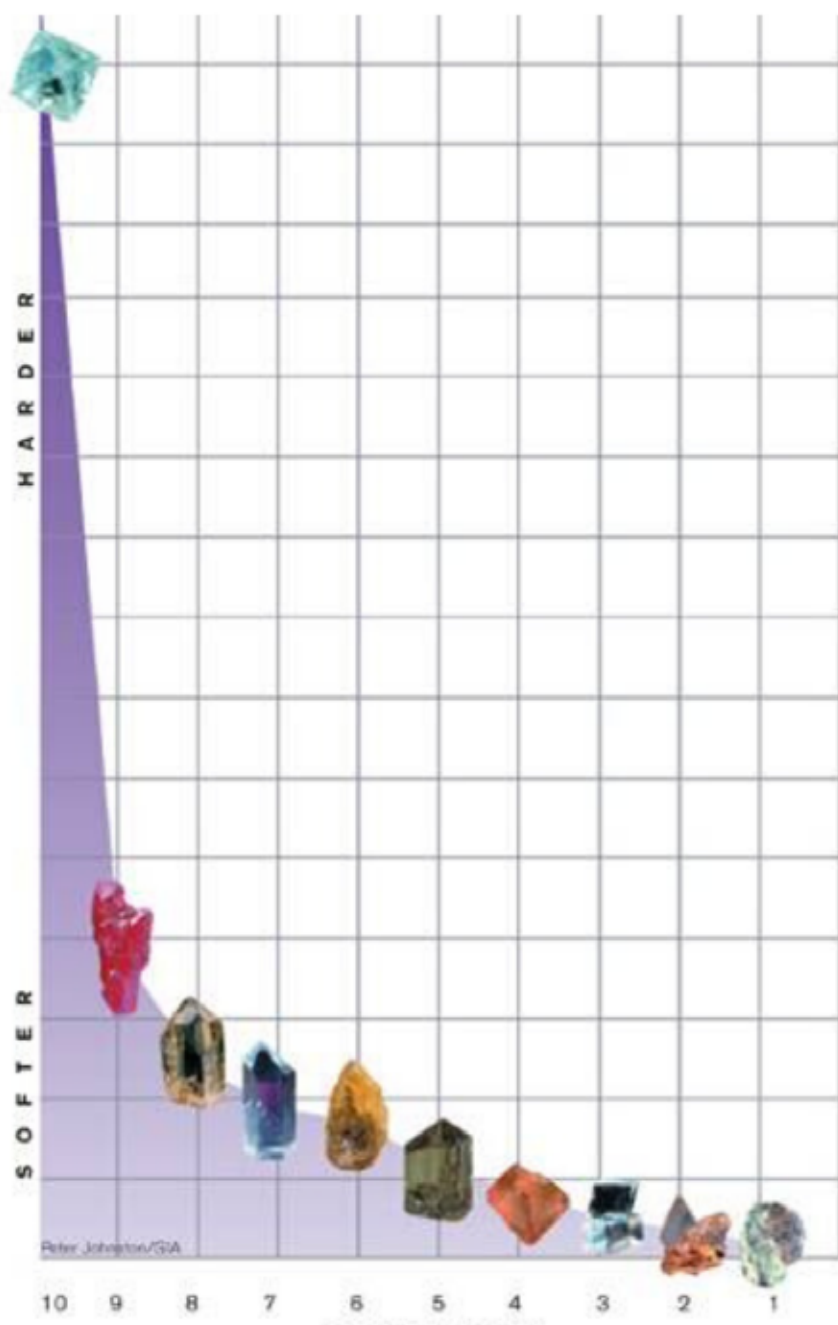
Emerald  
Turquoise  
Diamond  
Zircon  
Spinel  
Garnet

Ruby  
Amethyst  
Peridot  
Topaz  
Pearl  
Opal



# HOW HARD ARE GEMS?

The Mohs Hardness Scale measures the hardness of gems. Can you guess the ranking of the 10 gems used on the scale?



\_\_\_\_\_ Gypsum

\_\_\_\_\_ Apatite

\_\_\_\_\_ Diamond

\_\_\_\_\_ Topaz

\_\_\_\_\_ Talc

\_\_\_\_\_ Feldspar

\_\_\_\_\_ Corundum

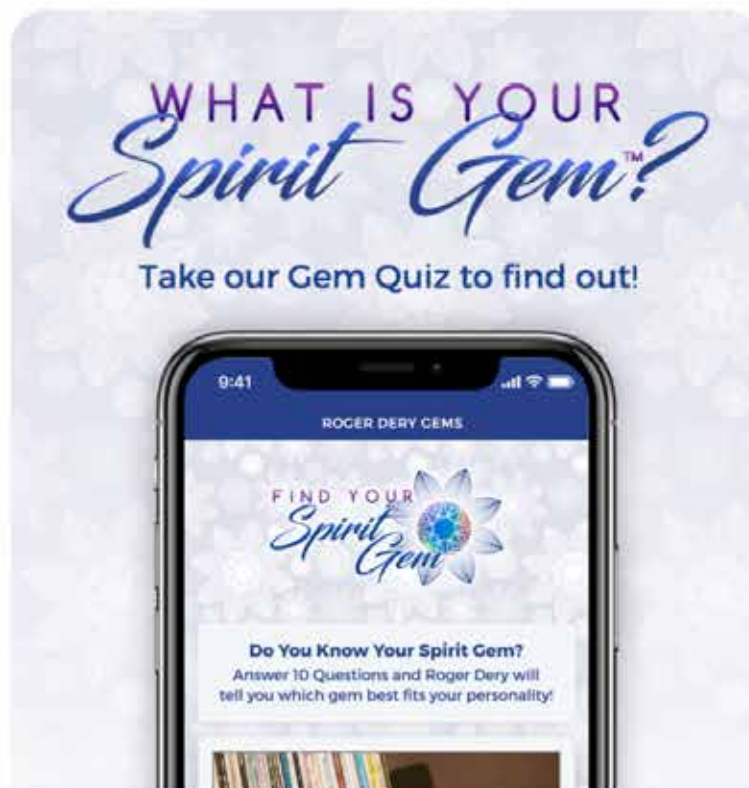
\_\_\_\_\_ Calcite

\_\_\_\_\_ Fluorite

\_\_\_\_\_ Quartz



# DO YOU KNOW YOUR SPIRIT GEM?



**PLAY NOW at**  
**[www.rogerdery.com/quiz](http://www.rogerdery.com/quiz)**

Interested in learning more about gems?  
Contact your local jeweler!